

# CURVALED LED LIGHTING

Multi-Purpose Solution for:

Street & Area Lighting

Flood Lighting

Wall Packs

High/Low Bay

Garage Lighting



**DuraGuard**  
PRODUCTS INC.®



**AVAILABLE  
FALL 2011**



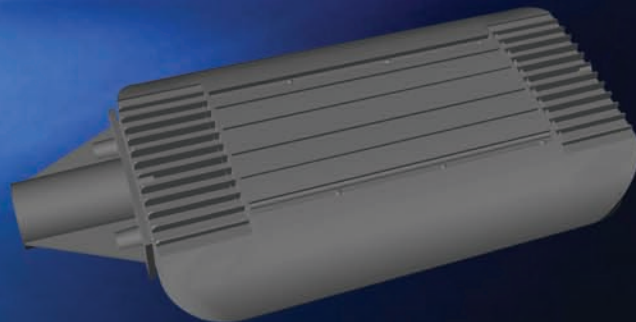
1304 NE 154th Street, Ste 104 • Vancouver, WA 98685

PHONE: 800-736-7991 • FAX: 800-287-4175

Visit us at [www.duraguard.com](http://www.duraguard.com)

REV. 082211

**DuraGuard**  
PRODUCTS INC.®  
A QSSI Company



# The CurvaLED Solution...

Introducing the CurvaLED, our sleek new multi-purpose LED lighting fixture! From the specially-engineered housing to the new LG Innotek LED module designed for outdoor use, this will fill the bill for area and flood lighting, perimeter, and even factory/warehouse applications. The unique extruded aluminum housing is offered in sizes to fit two to ten LED modules, and your choice of mounting options determines usage. The area/street lighting module fits 2 3/8" mounting arms, and for flood lighting, choose yoke, bracket, or slipfitter mounts. Pendant mounting is ideal for warehouse, factory, big box retail, and other high or low bay applications, and the adjustable wall brackets or yoke provide the ability to rotate the fixture to direct the light for optimum distribution.



Not just the fixture is new, the LED module is too! The module and heat sink work together to dissipate heat, prolonging the life of the module, while the built-in surge protection helps protect your investment from spikes and surges in the electrical supply. The modules are designed with specialty lenses that produce narrow, medium, and wide beam spreads that are combined to provide optimal light distributions and high photometric efficiency for each fixture type. Lumen output is a hefty 80 lumens per watt at 500mA and 90 lumens per watt at 350mA.

1304 NE 154th Street, Ste 104 • Vancouver, WA 98685

PHONE: 800-736-7991 • FAX: 800-287-4175

Visit us at [www.duraguard.com](http://www.duraguard.com)

**DuraGuard**  
PRODUCTS INC.<sup>®</sup>  
A QSSI Company



AC1L10



HC1L10

## SPECIFICATION:

### HOUSING:

Extruded aluminum housing with die-cast end caps and integral heat sinks for cooler operating temperatures. UV-resistant DuPont powdercoat paint over a chromate conversion coating for added durability. Stainless steel fasteners and formed silicone gaskets.

### LED MODULES:

Compact LG Innotech module with IP67 rating for outdoor use. Produces 1000 lumens at 500mA (12 watts), or 810 lumens at 350mA (9 watts)

Excellent quality of light with CCT of 6500K and CRI of 70+, using 4-step MacAdam ellipses

Module operating temperature: -40° to 50°C

Rated for 50,000 hours

RoHS compliant

### DRIVERS:

Xtitanium electronic drivers, 120-277v, 50/60Hz

Driver operating temperature: -40° to 55°C

Minimum power factor .90, efficiency greater than 88%

Optional dimming available for more energy savings

Surge protection 2.5KV

IP54, RoHS compliant

### MOUNTING:

2<sup>3</sup>/<sub>8</sub>" mounting arm adapter, yoke, two-piece swivel bracket, slipfitter, 1/2" NPT knuckle, pendant mount, adjustable wall brackets

FC1L can be mounted on ground stake.

1304 NE 154th Street, Ste 104 • Vancouver, WA 98685

PHONE: 800-736-7991 • FAX: 800-287-4175

Visit us at [www.duraguard.com](http://www.duraguard.com)



WC1L6



FC1L4

**DuraGuard**  
PRODUCTS INC.®  
A QSSI Company



Pendant Mount



Adjustable wall bracket



Yoke



Two-piece swivel bracket



1/2" NPT knuckle mount



Slipfitter



Mounting arm adapter

## MOUNTING

2<sup>3</sup>/<sub>8</sub>" mounting arm adapter, yoke, two-piece swivel bracket, slipfitter, 1/2" NPT knuckle, pendant mount, adjustable wall brackets.

Heavy-duty ground stake or post top fitter available for knuckle mount.

1304 NE 154th Street, Ste 104 • Vancouver, WA 98685

PHONE: 800-736-7991 • FAX: 800-287-4175

Visit us at [www.duraguard.com](http://www.duraguard.com)

**DuraGuard**  
PRODUCTS INC.<sup>®</sup>  
A QSSI Company